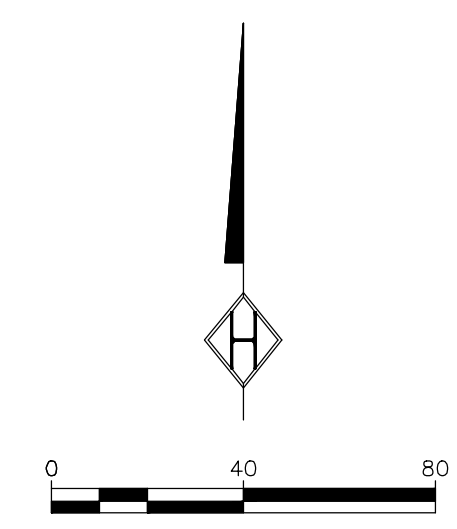
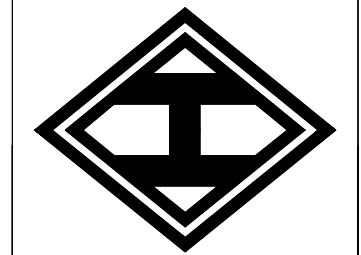


SEE PLAT FOR
EASEMENT LOCATIONS



HOMEYER
ENGINEERING, INC.
CIVIL ENGINEERING & PLANNING
SITE & LAND PLANNING
P.O. BOX 294527 • LEWISVILLE, TEXAS • 75039
972-906-9985 PHONE • 972-906-9987 FAX
WWW.HOMEYER-ENGINEERING.COM



DENTON TAP STORAGE
LOTS 3R1 & 3R2, BLOCK C
HIGHPOINT OAKS ADDITION
5.798 ACRES, ZONED "LI"
CITY OF LEWISVILLE, TEXAS

DIMENSION CONTROL
PLAN

REVISIONS:
01-09-08
1. REVISED PARKING &
ADDED DRIVE-THRU
FOR BUILDING "E".
2. REVISED PROPERTY
LINE.

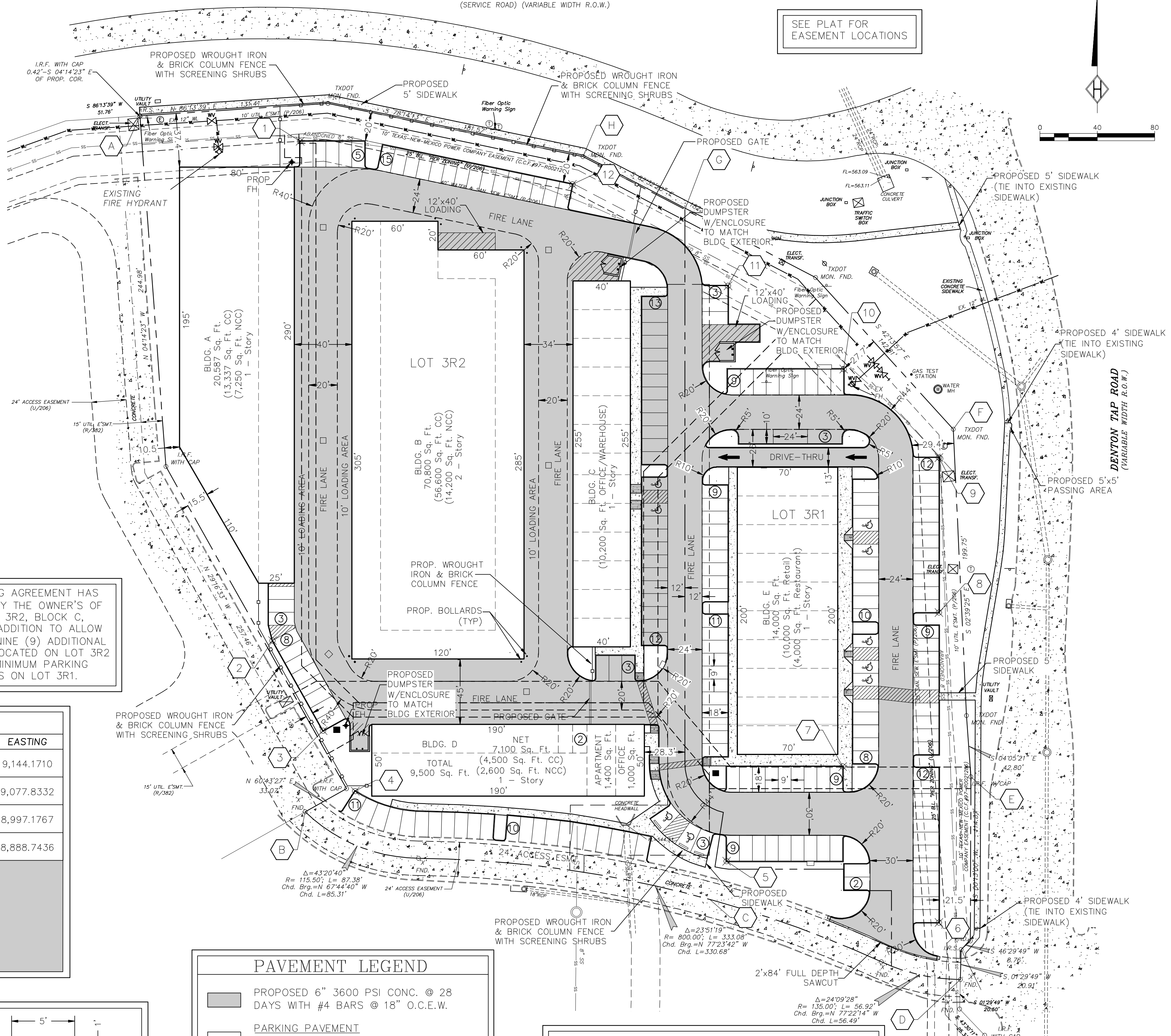
DATE: 03/19/07

HEI #: 06-023

SHEET NO: 62



THE SEAL APPEARING ON THIS
DOCUMENT WAS AUTHORIZED BY
STEVEN R. HOMEYER, P.E. 86942
ON JANUARY 16, 2008.



A CROSS PARKING AGREEMENT HAS
BEEN EXECUTED BY THE OWNER'S OF
LOTS 3R1 AND 3R2, BLOCK C,
HIGHPOINT OAKS ADDITION TO ALLOW
FOR THE USE OF NINE (9) ADDITIONAL
PARKING SPACES LOCATED ON LOT 3R2
TO MEET THE MINIMUM PARKING
REQUIREMENTS ON LOT 3R1.

LOT 3R1 PARKING TABULATION

RETAIL/RESTAURANT BUILDING "E" = 14,000 SF
10,000 SF RETAIL @ 5.5/1000 SF = 55 SPACES
4,000 SF RESTAURANT @ 1.5/100 SF = 60 SPACES

BUILDING PARKING REQUIRED: 115
BUILDING PARKING PROVIDED: 106*

BUILDING HANDICAP PARKING REQUIRED: 5
BUILDING HANDICAP PARKING PROVIDED: 5

PARKING SPACE DIMENSIONS: 9'x18'
DRIVE AISLE WIDTH: 24'
LOADING AREA: (1) 12'x40'

* IN ORDER TO MEET THE MINIMUM PARKING REQUIREMENTS FOR
LOT 3R1, NINE (9) PARKING SPACES MUST BE UTILIZED FROM THE
ADJACENT LOT 3R2.

LOT 3R2 PARKING TABULATION

BUILDING "A" - 20,587 SF
13,337 SF CLIMATE CONTROL @ 1/2,000 SF = 7 SPACES
7,250 SF NON-CLIMATE CONTROL WITH 10' LOADING LANE

BUILDING "B" - 70,800 SF
56,600 SF CLIMATE CONTROL @ 1/2,000 SF = 28 SPACES
14,200 SF NON-CLIMATE CONTROL WITH 10' LOADING LANE

BUILDING "C" - 10,200 SF
3,000 SF OFFICE @ 1/200 SF = 15 SPACES
7,200 SF WAREHOUSE @ 1/1,000 SF = 7 SPACES

BUILDING "D" - 9,500 SF
1,000 SF OFFICE @ 1/200 SF = 5 SPACES
1,400 SF APARTMENT @ 2 SPACES PER RESIDENCE = 2 SPACES
4,500 SF CLIMATE CONTROL @ 1/1,000 SF = 4 SPACES
2,600 SF NON-CLIMATE CONTROL WITH 10' LOADING LANE

PARKING REQUIRED: 68
PARKING PROVIDED: 83

HANDICAP PARKING REQUIRED: 4
HANDICAP PARKING PROVIDED: 4

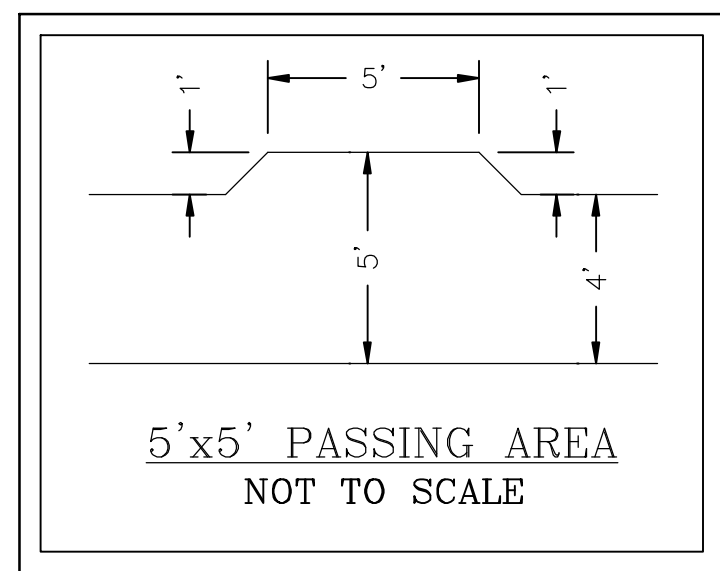
PARKING SPACE DIMENSIONS: 9'x18'
DRIVE AISLE WIDTH: 24'
LOADING AREA: (1) 12'x40'

DESIGN POINTS

PT	NORTHING	EASTING	PT	NORTHING	EASTING	PT	NORTHING	EASTING
A	8,415.1361	8,587.2246	1	8,397.4307	8,698.8952	9	8,176.9929	9,144.1710
B	7,930.0767	8,702.3916	2	8,049.4553	8,679.6833	10	8,238.6854	9,077.8332
C	7,896.0533	8,984.4977	3	7,986.6514	8,714.8923	11	8,296.6853	8,997.1767
D	7,813.2503	9,159.1832	4	7,944.4736	8,737.2926	12	8,367.3610	8,888.7436
E	7,954.5484	9,166.5158	5	7,895.6854	8,996.1710			
F	8,196.7784	9,154.2045	6	7,852.9929	9,144.1710			
G	8,349.8430	8,967.1589	7	7,961.6854	9,077.1589			
H	8,386.7665	8,896.1115	8	8,068.9929	9,144.1710			

LEGEND

I.R.F.	IRON ROD FOUND	⊗	POWER POLE
I.R.S.	IRON ROD SET	⊙	LIGHT POLE
"X"	CUT X IN CONCRETE	⊗	WATER VALVE
F.C.P.	FENCE CORNER POST	⊙ SSMH	SANITARY SEWER MANHOLE
///	ASPHALT	⊗	FIRE HYDRANT
⊙	TELEPHONE MANHOLE	⊗ WM	WATER METER



PAVEMENT LEGEND

	PROPOSED 6" 3600 PSI CONC. @ 28 DAYS WITH #4 BARS @ 18" O.C.E.W.
	PARKING PAVEMENT PROPOSED 5" 3600 PSI CONC. @ 28 DAYS WITH #4 BARS @ 18" O.C.E.W.
	SIDEWALK PAVEMENT PROPOSED 4" 3000 PSI CONC. @ 28 DAYS WITH #3 BARS @ 18" O.C.E.W.
	DUMPSTER PAVEMENT PROPOSED 8" 3600 PSI CONC. @ 28 DAYS WITH #4 BARS @ 18" O.C.E.W.

- NOTES:**
- THE BUILDING EXTERIOR FINISH SHALL BE A MINIMUM OF 80% BRICK OR STONE.
 - OUTSIDE STORAGE SHALL BE LIMITED TO 10% OF THE OVERALL LOT AREA AND MUST BE SCREENED IN ACCORDANCE WITH CITY OF LEWISVILLE REQUIREMENTS.
 - THERE ARE NO PROTECTED TREES LOCATED WITHIN THE SITE BOUNDARIES